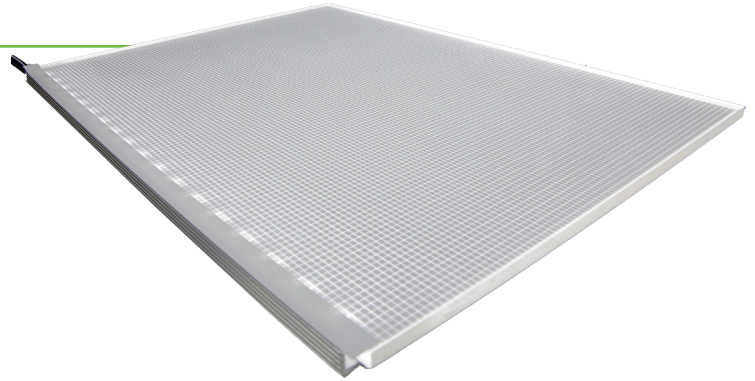


Bright Green LED Light Panel

Bright Green LED Light Panel is a slim, efficient and easy way to illuminate graphics, signs and architectural features.

Our LED light panels are custom engraved acrylic sheets, illuminated by LEDs from the edge. This light guide design ensures bright, even illumination across the whole panel.

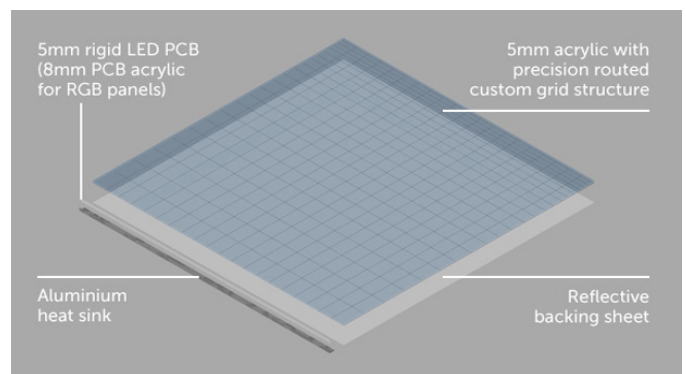


Specification

Maximum illuminated dimensions	1 side - 600 x 600mm 2 side LED: 2400 x 1500mm 4 side LED: 2400 x 2000mm
Thickness	5mm as standard or 8mm option
Operating voltage	12 or 24V DC
Typical power	20W per linear metre
Power supply	External, 1 metre cable - custom tails and DC connector option also available
Principal materials	Aluminium, acrylic, PET
Lifetime	50,000 hours +
Typical weight	7kg per square metre (Frame A)
Standard colours	Neutral white 5300K, Cool white 6000K Warm white 3000K, Red, blue, green and RGB
Dimmable	Yes
Diffuser	No diffuser supplied as standard, optional 1.5mm opal diffuser available

We use a custom engraving process whereby as the distance from the LEDs increases the spacing between the etched lines decreases.

This light guide design means that you get even diffusion across the entire panel - no striping and no drop off in brightness toward the middle of the panel.



Tel +44 (0) 1932 355221 Email info@brightgreentechnology.com
Find out more at www.brightgreentechnology.com
or visit www.ledlightpanel.com

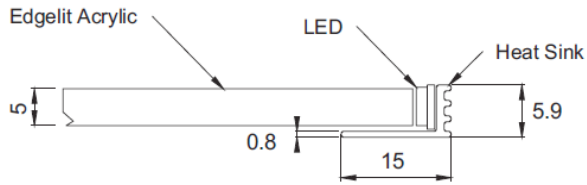
© 2015 Bright Green Technology Limited

bright green.
technology

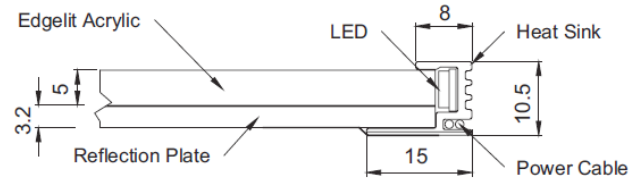
Bright Green LED Light Panel

Dimensions

Frame type A



Frame type B



Electrical Connection

If multiple LED Light Panels units are wired to a single power supply, connect them in parallel, not in series to avoid voltage drop and maximise light output.

Operation Notes

Operating temperature range: -10° to 45° C.

Storage temperature range: -20° to 60° C.

Connection

Installation should be carried out by suitably qualified personnel.

After removal of packaging, wear cotton gloves to complete install. To clean use a non-solvent, non-abrasive glass cleaner on all plastic parts.

