

Bright Green Channel Modules

Bright Green Channel Modules offer the luminosity and brightness of a well known brand at a much lower cost. The LEDs are strictly bin controlled for consistent colour temperature.

The modules are designed for backlighting channel letters and general, architectural lighting purposes.



Product Range

Product code	Colour	Colour temp*	Lumens*	Voltage	Power	Max in series	IP rating	No. of LEDs
CM-1CW12-200	Cool white	6700K	18.0	12	0.24W	200	63	1
CM-1WW12-200	Warm white	2700K	15.0	12	0.24W	200	63	1
CM-1RD12-200	Red	620nm	7.0	12	0.24W	200	63	1
CM-1GR12-200	Green	525nm	13.0	12	0.24W	200	63	1
CM-1BL12-200	Blue	455nm	3.0	12	0.24W	200	63	1
CM-2CW12-50	Cool white	8000K	36.0	12	0.48W	50	65	2
CM-2RD12-50	Red	625nm	12.0	12	0.48W	50	65	2
CM-2GR12-50	Green	525nm	20.0	12	0.48W	50	65	2
CM-2BL12-50	Blue	460nm	4.5	12	0.48W	50	65	2
CM-3CW12-50	Cool white	8000K	54.0	12	0.72W	50	65	3
CM-3RD12-50	Red	625nm	18.0	12	0.72W	50	65	3
CM-3GR12-50	Green	525nm	30.5	12	0.72W	50	65	3
CM-3BL12-50	Blue	460nm	6.8	12	0.72W	50	65	3
CM-4CW12-50	Cool white	8000K	72.0	12	0.96W	50	65	4
CM-4RD12-50	Red	625nm	24.0	12	0.96W	50	65	4
CM-4GR12-50	Green	525nm	40.0	12	0.96W	50	65	4
CM-4BL12-50	Blue	460nm	9.0	12	0.96W	50	65	4

* Typical values

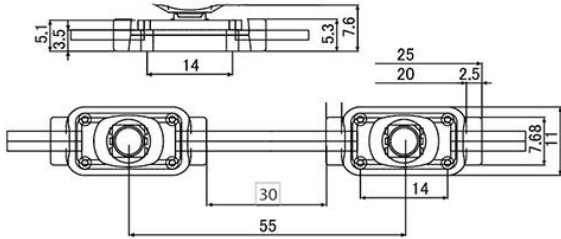
Tel +44 (0) 1932 355221 Email info@brightgreentechnology.com
 Find out more at www.brightgreentechnology.com
 or buy online at www.brightgreendirect.com

bright green.
 technology

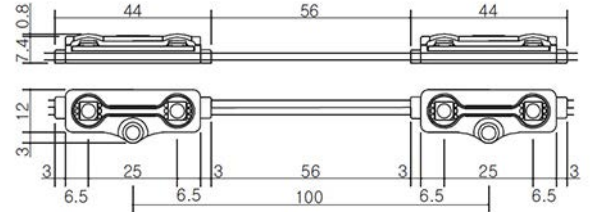
Bright Green Channel Modules

Dimensions

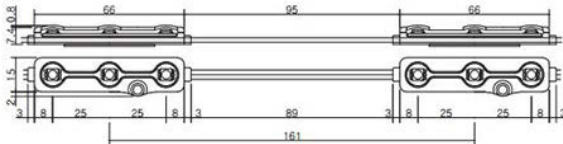
1 Channel Module



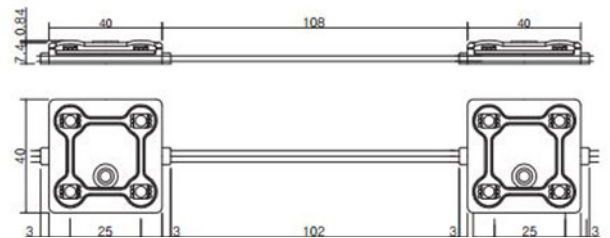
2 Channel Module



3 Channel Module



4 Channel Module



Electrical Connection

1 & 2 LED Channel Module - maximum run in series is 200 modules, use another run in parallel to connect more.

3 & 4 LED Channel Module - maximum run in series is 50 modules, use another run in parallel to connect more.

Operation Notes

Operating temperature range: -20° to 60° C.

Storage temperature range: -30° to 60°C.

Connection

Installation should be carried out by suitably qualified personnel. Connect to a stabilised power supply with full approvals.

